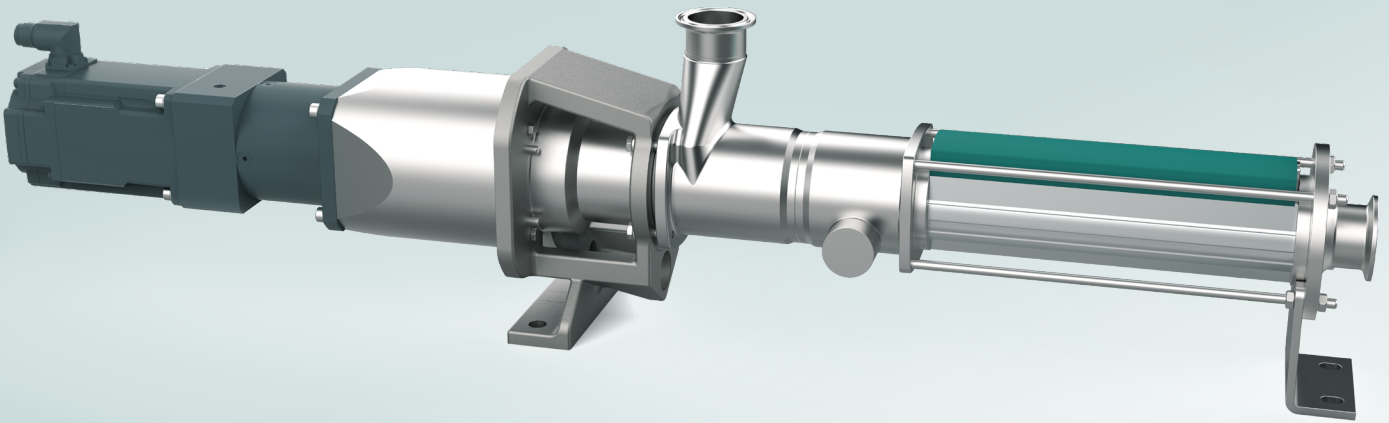


## NETZSCH NEMO® Pump for the Battery Industry



The new NETZSCH NEMO® Progressing Cavity Pump for the Battery Industry addresses the critical issues for the battery cell slurry preparation/mixing and electrode coating pump services: metal contamination, bubble formation, and operational longevity. Having supplied thousands of pumps to the battery industry for years, this pump is the latest, advanced NETZSCH design developed for this industry, providing solutions for challenging services.

### Product Advantages

- Metal-free wetted wearing parts design removes source of metal contamination in slurries.
- Magnetic coupling hermetically sealed to avoid air bubbles during coating process.
- Magnetic coupling prevents escape of toxic vapors.
- Ceramic rotors available for optimum longevity.
- Coupling rod optimized for automated cleaning processes.
- iFD-Stator option for reduced spare parts costs.

- Options for standard sealing, connections for flushing, and temperature probe.

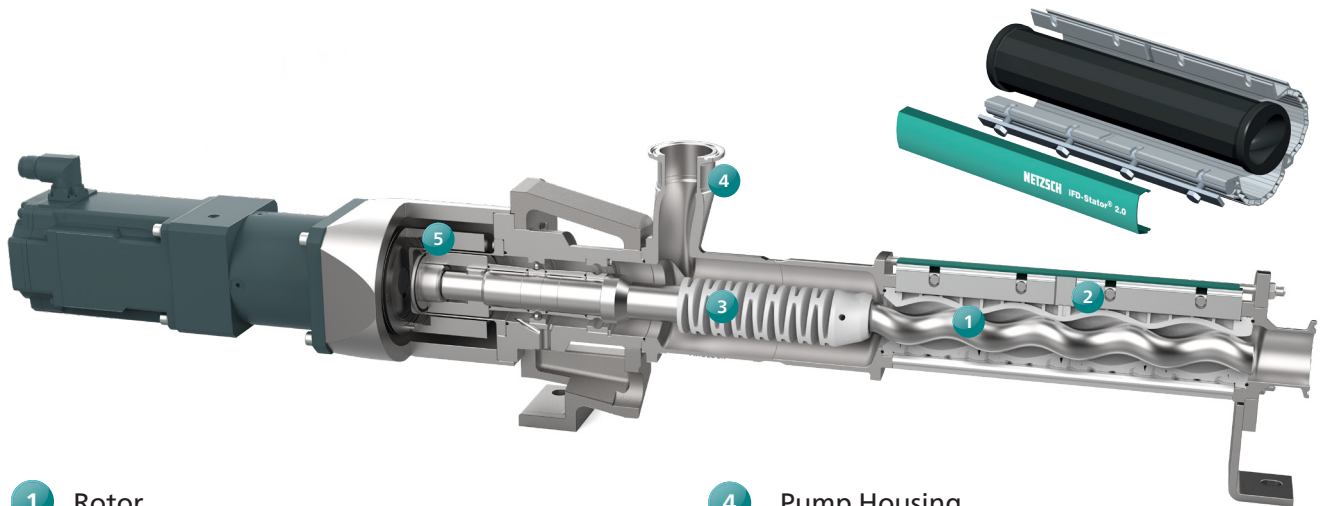
### Performance

- Slurry solids content up to 70% by volume
- Capacity up to 88 gpm / 20 m<sup>3</sup>/h (additional sizes launching soon)
- Maximum pressure 145 psi / 10 bar
- Max. viscosity up to 20,000 mPas
- Max operating temperature up to 176°F / 80° C
- Higher limits with alternate designs

### Wide application range

- Slot-die coating supply pumps.
- Transfer pumps: electrode slurries, pCAM, CAM, ceramic slurries, etc.
- Slurry prep pumps: raw materials, additives, mixing applications.
- Precise metering pumps: binders, solvents, electrolytes, chemicals.
- Battery recycling process pumps.

# NETZSCH NEMO® Pump for the Battery Industry



## 1 Rotor

Rotors available in solid ceramic versions offering excellent operating lifetime and eliminating metal wear particles, thus avoiding contamination of slurries. Standard metal rotors also available.

## 2 Stator with iFD® technology

Both elastomeric and non-metallic polyamide stators can be fitted into the unique iFD® stator housing from NETZSCH. This gives maximum flexibility for handling both anode and cathode slurries. This also reduces spare part costs and eliminates unnecessary waste.

## 3 Coupling Rod

The specially designed flexible coupling rod manufactured from non-metallic polyamide is significantly shorter than using a metallic flexible rod. This reduces the retained volume within the pump housing leading to less product waste during cleaning operations. The non-metallic coupling rod eliminates metal wear particles that can contaminate slurries.

The design of the coupling rod has been optimized for automated cleaning processes.

## 4 Pump Housing

Tangential inlet connection improves the cleanability of the pump housing during automated cleaning.

## 5 Magnetic Coupling

Magnetic coupling provides a hermetically sealed pump guaranteeing no ingress of air into the product thus avoiding air bubbles during the coating process.

Magnetic coupling prevents the escape of potentially toxic vapors— such as NMP—increasing plant safety and eliminating the need for added air extraction around the pump seal thereby saving capital investment and further operational costs.

Additional air extraction from any source point is possible from the magnetic coupling with an optional vacuum pump providing optimum quality during coating.

Standard sealing system also available for non-magnetic coupled pumps.

Optional connections for flushing (automated cleaning) and temperature probe available.

# NETZSCH®

[pumps-systems.netzsch.com](http://pumps-systems.netzsch.com)

NETZSCH Pumps USA · 119 Pickering Way · Exton, PA 19341  
Phone: 610 363-8010 · Fax: 610 363-0971 · [npa@netzsch.com](mailto:npa@netzsch.com)

NETZSCH Pumps USA · 1511 FM 1960 Road · Houston, TX 77073  
Phone: 346 445-2400 · [npa@netzsch.com](mailto:npa@netzsch.com)

NETZSCH Canada Incorporated · 500 Welham Road · Barrie, ON L4 8Z7  
Phone: 705 797-8426 · Fax: 705 797-8427 · [ntc@netzsch.com](mailto:ntc@netzsch.com)