

NEMO® BH Sanitary Advanced Open Hopper Pump

Ideal for non free-flowing products that need a higher level of hygienic design

The sanitary pump for non free-flowing applications

NEMO® BH Sanitary Advanced Open Hopper Pumps are designed to handle high-consistency products with a low degree of flowability. NEMO® BH Sanitary Advanced Open Hopper pumps provide continuous, pressure-stable, gentle and low-pulsation conveyance with metering in proportion to rotational speed.

The pump housing is designed with a larger, rectangular hopper and force-feed chamber. The coupling rod is equipped with a conveyor auger that transports the product into the rotor/stator system. The auger is oversized and provides about 80% more flow to ensure improved pump efficiency. The conveyor auger is perfectly synchronized with the rotor/stator system and covers almost the entire hopper opening. The hopper opening can be customized to fit individual specifications.

Your Benefits

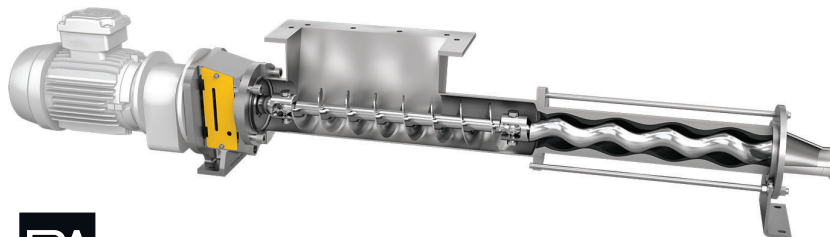
- Gentle conveyance.
- Economical operation and routine maintenance requirements only.
- Close coupled, compact and economical.
- Low noise, low vibration.
- Easy to clean and service.
- Adaptable to meet your closed-system requirements.
- Can handle non free-flowing products such as fruits, vegetables, and meat emulsions.

NEMO® BH Sanitary Advanced Open Hopper Pump Features

- Open hygienic joint.
- FDA compliant materials.
- Pump housing with enlarged rectangular hopper.
- Force-feed chamber.
- Integrated feeding screw in the hopper.
- Continuous low-pulsation conveyance unaffected by fluctuations in pressure and viscosity.
- High pressure capability without valves.
- Stator with funnel-shaped entrance for optimal filling of the conveying chamber.
- Discharge at lowest point.
- Stainless steel pedestal as standard.
- Internal product contact surfaces polished to 32 Ra, externally polished.

Capabilities

- Flow: 200 gpm / 45 m³/h
- Pressure: 360 psi / 24 bar
- Particle size: 2.5" / 61 mm



NETZSCH Pumps USA
119 Pickering Way
Exton, PA 19341
Tel.: 610 363-8010
Fax: 610 363-0971
npa@netzsch.com

NETZSCH Pumps USA
1511 FM 1960 Road
Houston, TX 77073
Tel.: 346 445-2400
npa@netzsch.com

NETZSCH Canada, Incorporated
500 Welham Road
Barrie, ON L4N 8Z7
Tel.: 705 797-8426
Fax: 705 797-8427
ntc@netzsch.com