

NEMO® BY Sanitary Prime Pump

The economical, FDA compliant solution for sensitive, abrasive and high viscosity pumping needs

FDA compliant pump

NEMO® BY Progressing Cavity Pumps can be used in any area of industry where a great variety of different substances must be pumped or very precisely dosed. From low viscosity media to products barely capable of flowing, with or without solid content, shear-sensitive, sticky or abrasive – with the NEMO® BY Sanitary Prime, even difficult substances are conveyed gently and with low pulsation.

In block construction with a flanged drive, this NEMO® pump is particularly compact. The NEMO® BY Sanitary Prime is economical with low investment, operating and maintenance costs. Two rotor/stator geometries cover a wide range of products and applications.

NEMO® BY Sanitary Prime Pump Features

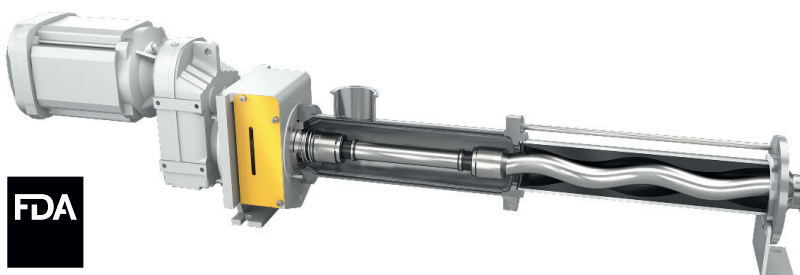
- FDA compliant materials.
- Continuous low-pulsation conveyance unaffected by fluctuations in pressure and viscosity.
- Conveyance volume in proportion to rotation speed with high dosing precision over entire rotational speed range.
- High pressure capability without valves.
- Robust, compact block construction.
- Mechanical seal directly under the intake port in the pumping space makes external flushing of the seal unnecessary in many applications.
- Short drive shaft and pump lantern offer high stability for mechanical seal installation.
- Centered suction tri clamp.
- Externally blasted.
- Polished to 32 Ra product contact surfaces.
- Food grade lubricated joint.
- Low noise, low vibration.
- Suction capability up to 27 ftwc / 9 mwc.
- Bi-directional.
- Vertical or horizontal installation.
- Temperatures from -40 °F to 392 °F / -40 °C to 200 °C.

Your Benefits

- Gentle conveyance.
- Easy to clean and service
- Low mean time between repairs.
- Low noise, low vibration.
- Economical operation and routine maintenance only.

Capabilities

- Flow: 880 gpm / 200 m³/h
- Pressure: 360 psi / 24 bar
- Particle size: 3" / 76 mm



FDA

NETZSCH Pumps USA
119 Pickering Way
Exton, PA 19341
Tel.: 610 363-8010
Fax: 610 363-0971
npa@netzsch.com

NETZSCH Pumps USA
1511 FM 1960 Road
Houston, TX 77073
Tel.: 346 445-2400
npa@netzsch.com

NETZSCH Canada, Incorporated
500 Welham Road
Barrie, ON L4N 8Z7
Tel.: 705 797-8426
Fax: 705 797-8427
ntc@netzsch.com